

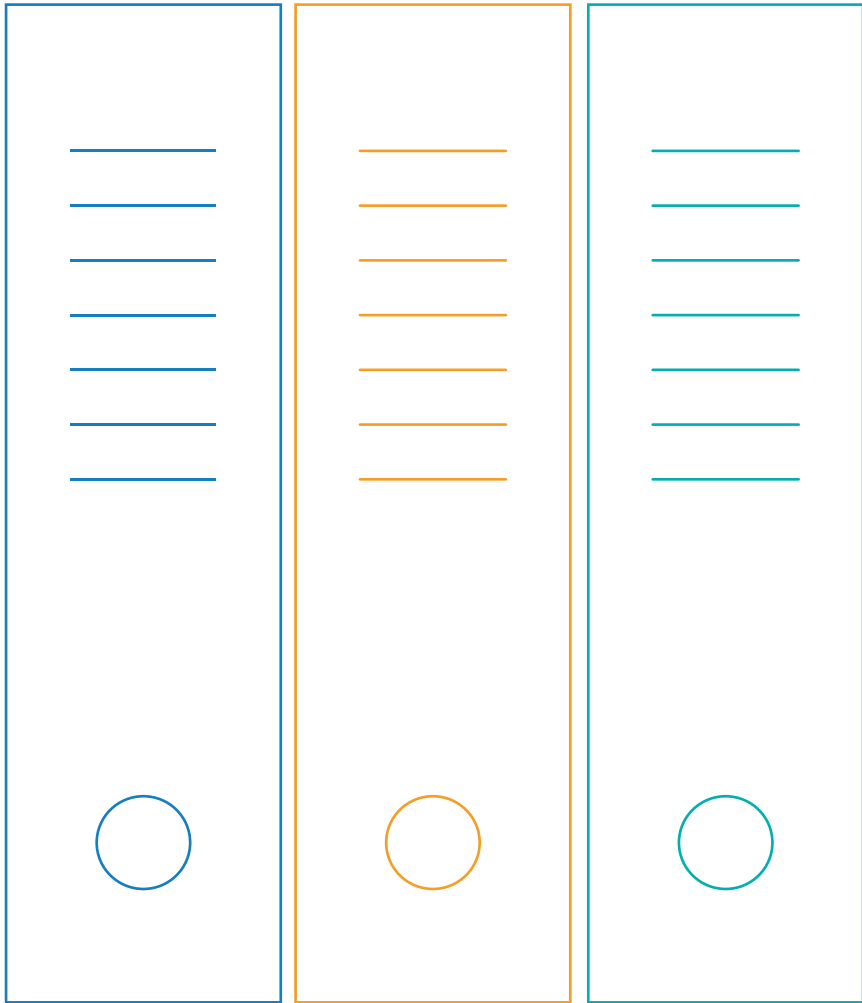


 MAKE
 STORAGE
 YOUR
 PLUS

  OPTIMIZER
PLUS



Today's workplaces are transforming into work-life places. They are evolving to support various working styles and the growing need for space; space for movement, space for recreation and space for organising. This is where space optimisation comes into play.



Introducing the intelligent mobile storage system,



with Push-Pull, Drive and Power Drive options. It is an elegantly designed, sturdy structure that saves on aisle spaces unlike other storages. Optimizer Plus gives an assurance on higher standards of safety, security of users and ease of use.

POWER DRIVE



Power Drive is equipped with a smart touch control panel and sensor control for ease of operation. Its innovative design is in compliance with the international safety standards for better user experience.



FEATURES

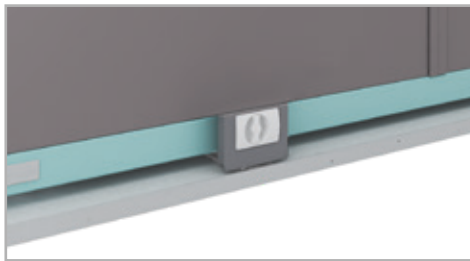
① Smart Touch Control Panel:

It is positioned at a suitable height for ease of access. It has different functions like START, STOP, RESET & UNLOCK.



② Centralized Locking:

All units can be locked together with this locking system. To operate again, the centralized lock should be unlocked.



③ Central Power Switch:

Equipped with central power switch, it offers convenience in operation.



④ Wooden Platform:

New platform with an ergonomically designed access ramp is easy to install and can be fixed directly on the ground or can be embedded in the pavement, which eliminates grouting and prevents civil floor work.



⑤ Passive Safety:

Power Drive is equipped to detect obstructions for the safety of users. It can detect a person entering the aisle and lock itself automatically.



Colour Options:

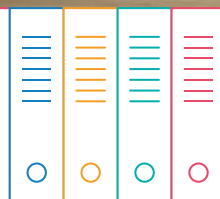


Sugar White



Aero Blue

DRIVE



Drive has a unique mechanical design with an optimised speed ratio that reduces the force required to move multiple units at once. It makes the movement effortless. The Drive is suitable for medium to heavy load application areas.



FEATURES

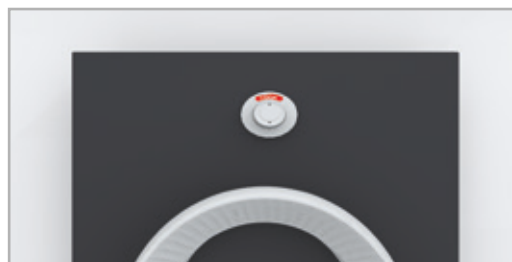
① Drive Wheel:

The ergonomically designed and positioned wheel provides a firm grip for operation. It has appealing aesthetics.



② Locking Knob on Each Unit:

It is used as manual locking to provide additional safety when the user is inside a specific aisle. It restricts the operation of the other units.



③ Ventilation Ready:

The front and rear panels are designed with perforations for ventilation.



④ Centralized Locking:

All units can be locked together with this locking system which is positioned on the cover unit of the last drive. To operate again, the centralized lock should be unlocked.



⑤ Wooden Platform:

New platform with an ergonomically designed access ramp is easy to install and can be fixed directly on the ground or can be embedded in the pavement, which eliminates grouting and prevents civil floor work.



Colour Options:



Sugar White



Warm Grey

PUSH-PULL



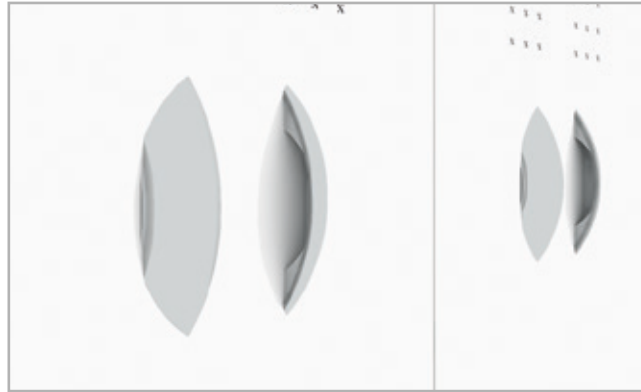
Push-Pull has a contemporary design to complement any indoor ambience. It is equipped with C-shaped handles that minimise the effort and facilitate smooth movement of the units.



FEATURES

① Push-Pull Handle:

The ergonomically designed C-shaped handles give a firm grip and decrease the effort required for movement of units.



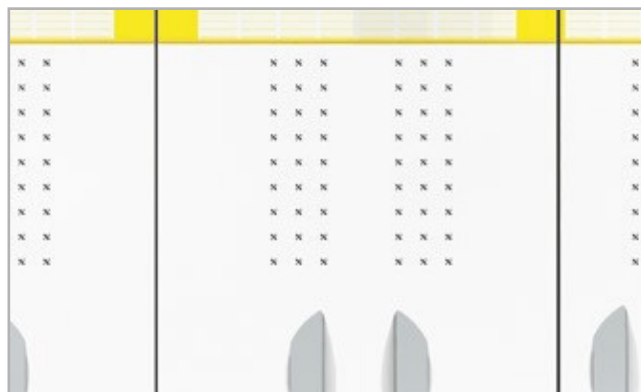
② Centralized Locking:

A locking stiffener is provided on the last unit to lock all units together.



③ Ventilation Ready:

The front and rear panels are designed with perforations for ventilation.



Colour Options:



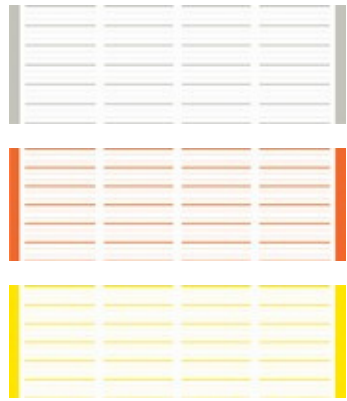
Sugar White



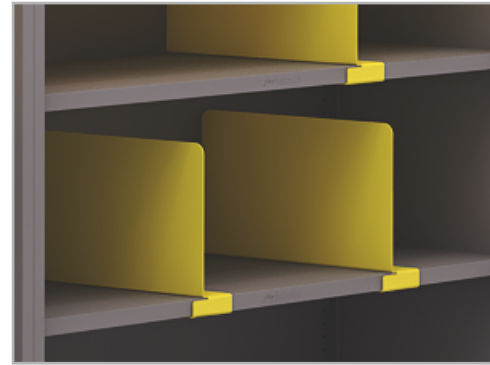
Warm Grey

COMMON FEATURES

- ① Each unit is equipped with an identification tag to increase the accessibility of users.



- ② **Adjustable Shelves:**
The adjustable shelves make it easy to accommodate items of varying heights with up to six loading levels.



- ③ The twin units are designed with two back panel options.



Solid back panel



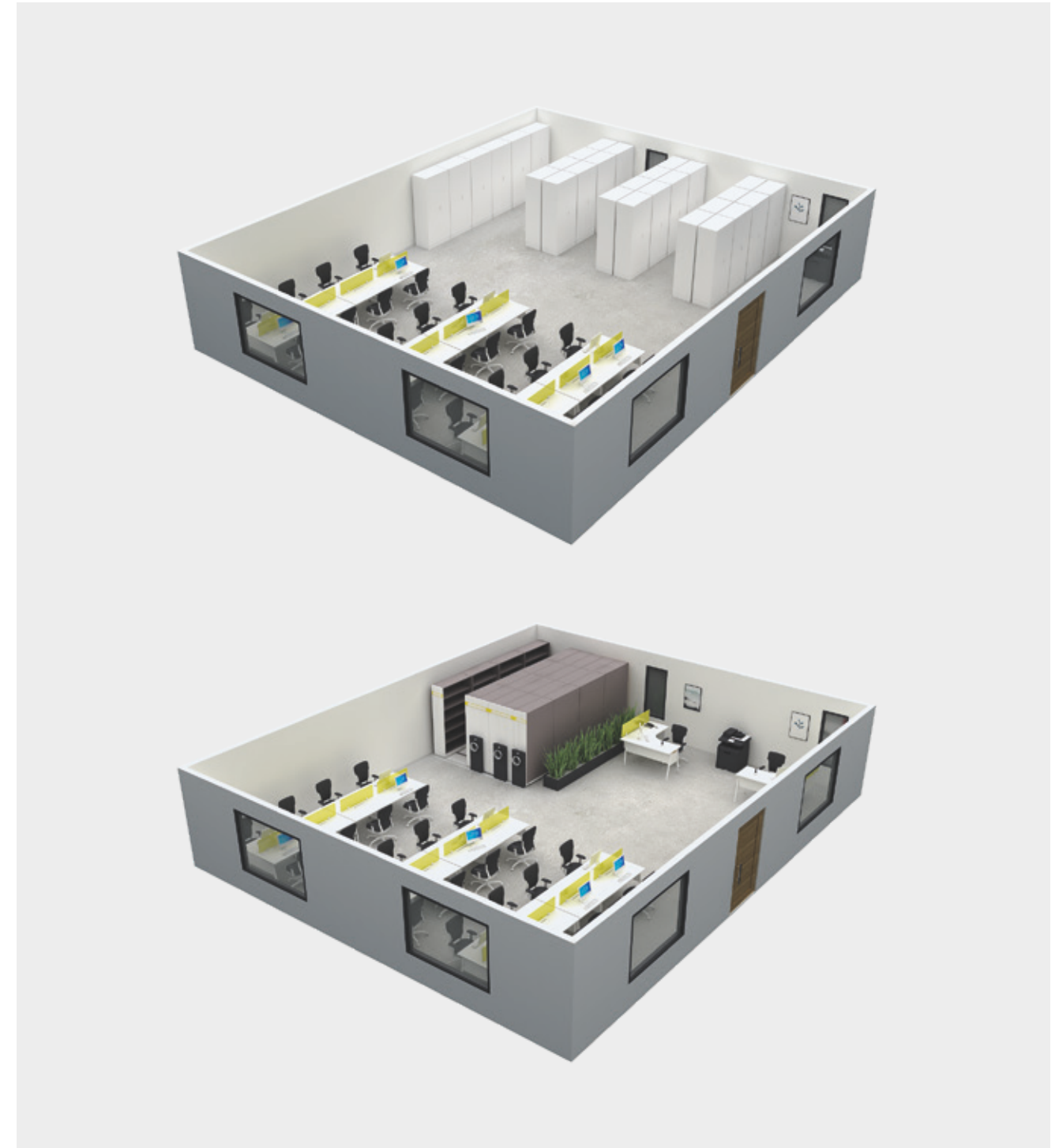
Cross member back panel

- ④ Each variant is designed for a soft start to achieve a smooth movement of the units. It is also suitable for storing delicate items.

- ⑤ Anti-rust treatment and epoxy polyester powder coating is given for longer product life.

- ⑥ Optimizer Plus range has a high load bearing capacity.

BENEFITS OF OPTIMIZER PLUS



- Space optimisation is a concern for companies today as it requires high real estate investments.
- Optimizer Plus increases the return on real estate investment by optimising workspace with less investment.
- It saves minimum 38% of space in any layout.
- It offers more space for people with maximised storage capacity.